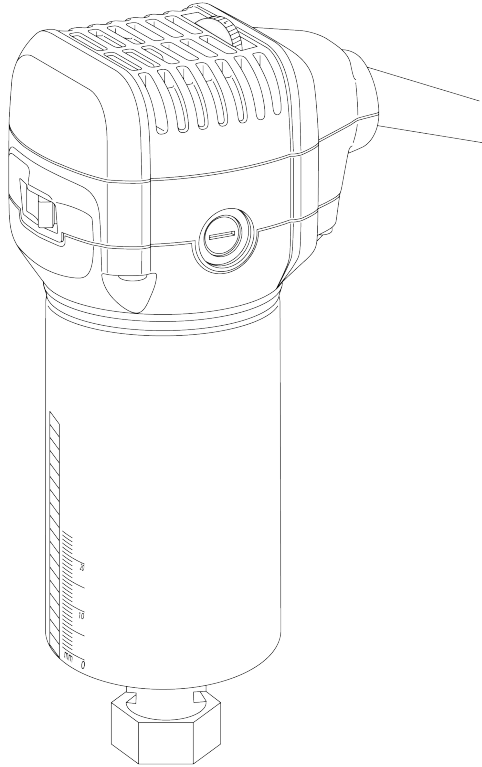




WORKBEE

Router Head



Owner's Manual

PRODUCT SPECIFICATIONS	
Rating	220-240V 50Hz 710W
RPM	13,000 – 33,000/min-1

WARNING

PLEASE READ THESE INSTRUCTIONS CAREFULLY AND KEEP FOR FUTURE REFERENCE

INTENDED USE.

Only use the WorkBee Router Head as described in this instruction manual. The use of any accessory or attachment or performance of any operation with this tool other than those recommended in this instruction manual may present a risk of personal injury and/or damage to property. This tool is not intended for use by persons with reduced physical, sensory or mental capabilities, or lack of experience and knowledge, unless they have been given supervision or instructions concerning use of the tool by a person responsible for their safety. Children should be supervised to ensure they do not play with the tool.

GENERAL SAFETY INFORMATION.

WARNING! Read all safety warnings and all instructions. Failure to follow the warnings and instructions may result in electric shock, fire and/or serious injury. Please retain all warnings and instructions for future reference. The term “power tool” in the warnings refers to your mains-operated (corded) power tool or battery-operated (cordless) power tool.

ELECTRICAL SAFETY.

Avoid body contact with earthed or grounded surfaces such as pipes, radiators, ranges and refrigerators. There is an increased risk of electric shock if your body is earthed or grounded. Do not expose power tools to rain or wet conditions. Water entering the power tool will increase the risk of electric shock.

WORK AREA SAFETY.

Keep your work area clean and well lit. Cluttered or dark areas invite accidents.

Do not operate power tools in explosive atmospheres such as in the presence of flammable liquids, gases or dust. Power tools create sparks which may ignite the dust or fumes.

Keep bystanders, children and animals away while operating the power tool. Distractions can cause you to lose control.

BEFORE USE.

WARNING! Know your WorkBee Router Head. Do not plug the tool into the power source until you have read and understood the information in this manual. Learn the tool's applications and limitations, as well as the specific potential hazards related to this tool, in order to reduce the risk of electric shock, fire or serious injury.

WARNING! If any part is missing or damaged, do not plug the tool into the power source or install any accessory until the missing or damaged part is repaired or replaced. Failure to follow this instruction could result in serious personal injury. Do not use a power tool while you are tired or under the influence of drugs, alcohol or medication. A moment of inattention while operating power tools may result in serious personal injury. Use personal protective equipment. Always wear eye protection. Protective equipment such as a dust mask, non-skid safety shoes, hard hat, or hearing protection used for appropriate conditions will reduce the risk of personal injury. **WARNING!** Contact with, or inhalation of, dusts arising from cutting applications may endanger the health of the operator and possible bystanders. Wear a dust mask specifically designed for protection against dust and fumes and ensure that persons within or entering the work area are also protected.

⚠ WARNING ⚠

PLEASE READ THESE INSTRUCTIONS CAREFULLY AND KEEP FOR FUTURE REFERENCE

Always wear eye protection. Any power tool can throw foreign objects into your eyes and cause permanent eye damage. Always wear safety goggles (not glasses) that comply with BS EN 166/ANSI Z87.1 safety standards. Everyday glasses have only impact-resistant lenses. They are not safety glasses.

WARNING! Wearing glasses or goggles **NOT** in compliance with BS EN 166/ANSI Z87.1 when operating this tool could cause serious injury.

Dress appropriately. Do not wear loose clothing or jewellery. Keep your hair, clothing and gloves away from moving parts to prevent them from becoming caught in the tool.

Remove any adjusting key or wrench before turning the power tool on. A wrench or key left attached to a rotating part of the power tool may result in personal injury.

If devices are provided for the connection of dust extraction and collection facilities, ensure that these are connected and properly used to reduce dust-related hazards.

Use clamps, or another practical way to secure and support the workpiece to a stable platform. Holding the work by hand or against your body leaves it unstable and may lead to loss of control. Make sure there are no nails or foreign objects in the path of the workpiece to be cut or sanded.

Prevent unintentional starting. Ensure the switch is in the off position before connecting to the power source and/or battery pack, picking up or carrying the tool. Carrying power tools with your finger on the switch or energising power tools that are switched on invites accidents.

MOUNTING.

The WorkBee Router Head is intended to be mounted to an Original WorkBee CNC Machine. To find out how to correctly mount the WorkBee Router Head to the Original WorkBee CNC Machine Please go to <https://learn.ooznest.co.uk>, and follow the guides

under the section 'Assembling Your WorkBee' for your version number of your machine. The WorkBee Router Head is not intended to be mounted to any other machine than the Original WorkBee CNC Machine. The WorkBee Router Head is not intended to be mounted in any other way than outlined in the guides.

POWER TOOL USE AND CARE.

Use the power tool, accessories and Router Bits etc. in accordance with these instructions, taking into account the working conditions and the work to be performed. Use of the power tool for operations different from those intended could result in a hazardous situation.

WARNING! Use only accessories recommended for this WorkBee Router Head. Follow the instructions that accompany the accessories. The use of improper accessories may result in injury to the operator or damage the tool.

Do not use the power tool if the switch does not turn it on and off. A power tool that cannot be controlled with the switch is dangerous and must be repaired.

Stay alert, watch what you are doing and use common sense when operating a power tool.

Keep hands away from cutting area. Never reach underneath a work piece for any reason. Do not insert fingers or thumb into the vicinity of the accessory/sanding attachments.

WARNING

PLEASE READ THESE INSTRUCTIONS CAREFULLY AND KEEP FOR FUTURE REFERENCE

Do not force the power tool. Use the correct power tool for your application. The correct power tool will do the job better and safer at the rate for which it was designed. Disconnect the plug from the power source before making any adjustments, changing accessories or storing. Such preventative safety measures reduce the risk of starting the power tool accidentally. The accessory will continue to move after releasing the switch. Always switch the tool off and wait for the accessory to come to a complete standstill before putting the tool down. Do not touch the workpiece or the accessory immediately after operating the tool. They can become very hot.

Never use dull accessory in the tool. They will cut slower, leave rough cuts and break easily due to added pressure and excessive heat. They will also overload the motor and cause premature failure of the tool. Have your power tool serviced by a qualified repair person using identical replacement parts only to ensure that the safety of the power tool is maintained.

STORAGE & MAINTENANCE.

Store idle power tools out of reach of children and do not allow persons unfamiliar with the power tool or these instructions to operate the power tool.

Power tools are dangerous in the hands of untrained users.

Maintain the power tool. Check for misalignment or binding of moving parts, breakage of parts and any other condition that may affect the power tool's operation. If damaged, have the power tool repaired before use. Many accidents are caused by poorly maintained power tools. Keep cutting tools sharp and clean. Properly maintained cutting tools with sharp cutting edges are less likely to bind and are easier to control. Keep accessories sharp. Dull or damaged accessory may cause the WorkBee Router Head to swerve or stall under pressure. Always use the appropriate type of accessories for the work-piece material and type of cut.

SAFETY SYMBOLS

The following safety symbols may appear on this product. Please ensure you understand their meanings before operating the WorkBee Router Head in order to prevent personal injury and avoid damage to the tool.



WARNING! Pay attention to all safety and guidance



Read manual before use



Wear eye and ear protection



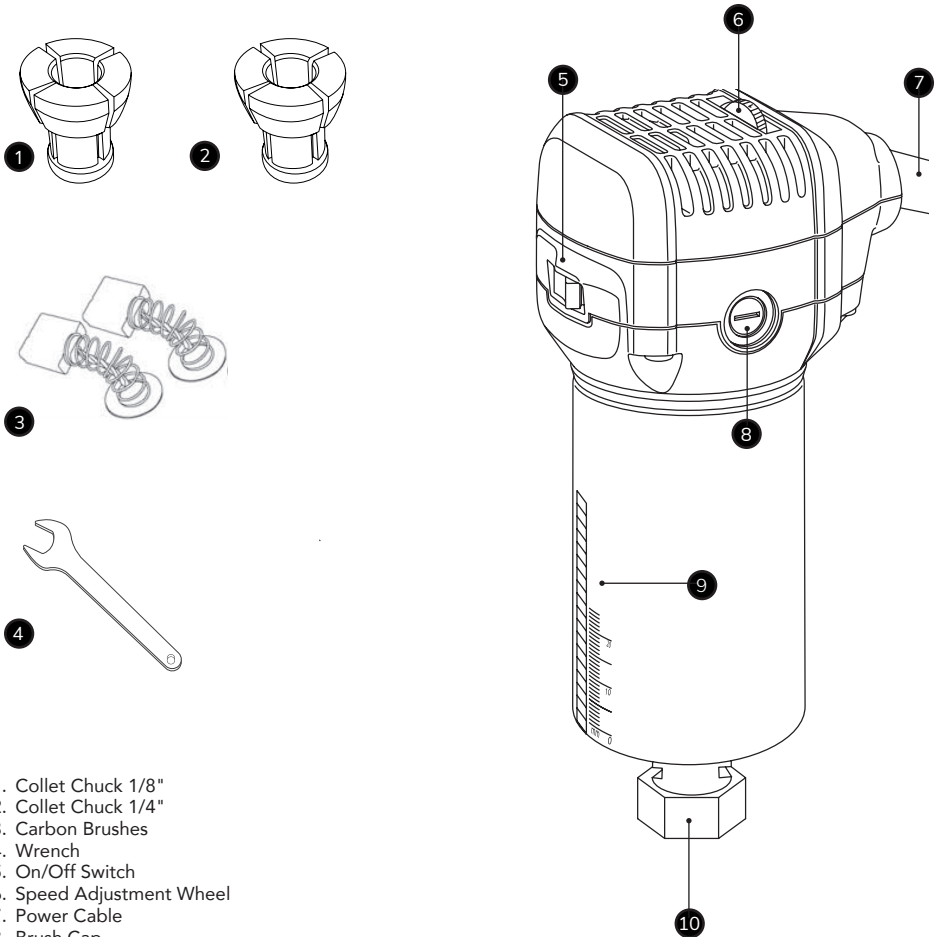
Wear a dust mask



Wear protective gloves

SPECIFICATION

VOLTAGE	RATED Ampere	RATED FREQUENCY	NO LOAD SPEED
V	W	Hz	min ⁻¹
220-240~	710	50/60	13,000 - 33,000



1. Collet Chuck 1/8"
2. Collet Chuck 1/4"
3. Carbon Brushes
4. Wrench
5. On/Off Switch
6. Speed Adjustment Wheel
7. Power Cable
8. Brush Cap
9. Scale + Adjustment Runner
10. Collet Nut

SPEED ADJUSTMENT

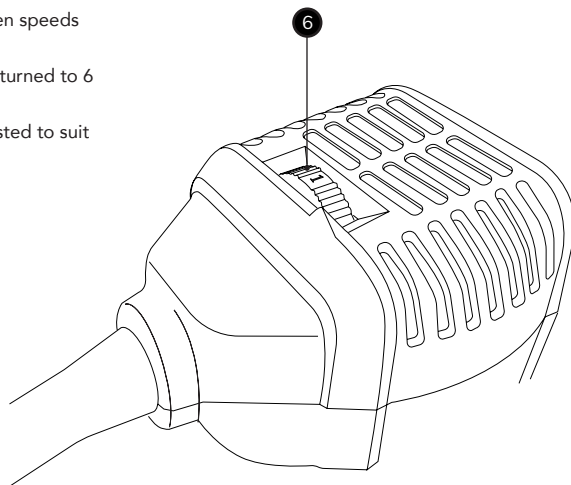
The speed can be adjusted by rotating the Speed Adjustment Wheel (6).

The Speed Wheel can be adjusted between speeds of 1-6.

Higher speed is achieved when the dial is turned to 6 and at its lowest speed when set to 1.

This allows the speed to be correctly adjusted to suit the type of material and task at hand.

SPEED WHEEL NUMBER	Min ⁻¹
1	13,000
2	17,000
3	22,000
4	29,000
5	31,000
6	33,000



MAINTENANCE

CLEANING THE TOOL.

Keep your tool clean at all times. Dirt and dust will cause internal parts to wear quickly, shortening the tool's service life.

Clean the body of your tool with a soft brush or dry cloth.

CAUTION: Never use caustic agents to clean plastic parts. If dry cleaning is not sufficient, use a mild detergent on a damp cloth.

WARNING! Do not allow water to come into contact with the tool.

If available, use clean, dry, compressed air to blow through the ventilation holes (where applicable).

Ensure the tool is thoroughly dry before using it.

GENERAL INSPECTION.

Regularly check that all the screws are tight as they may vibrate and loosen over time.

REPAIRS.

WARNING! Repairs should only be carried out by an authorized technician using identical replacement parts. Do not attempt repairs yourself.

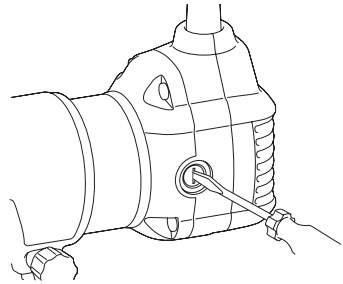
CHANGING THE BRUSHES

Regularly check and replace the Carbon Brushes **(3)** when required.

NOTE: Always turn off tool first and replace Carbon Brushes as sets.

To replace, remove use a screwdriver to remove the Brush Holder Caps **(8)**.

Remove the worn Carbon Brushes and insert the new ones and replace the Brush Holder Caps.



TROUBLESHOOTING

PROBLEM	SOLUTION
THE TOOL WILL NOT START.	Ensure the tool is connected to the mains power supply. Activate the ON/OFF Switch. Check the fuse and replace if required. Check and replace the Brushes if required.
THE TOOL KEEPS KICKING/STALLING.	Relieve some pressure on the tool. Do not exert extra force, let the tool do the job.
EXCESSIVE VIBRATION.	The material is too thick and is placing strain on the motor. If excessive noise continues, discontinue use and seek repairs.
EXCESSIVE NOISE.	Too much force is being exerted on the tool. Use less force.
THE TOOL IS OVERHEATING.	Allow the tool to cool before using again.