

RAT RIG HARDWARE

# V-SLIDER DIY KIT

---



**BUILD YOUR OWN CAMERA SLIDER**

# **BUILD MANUAL**

## **BILL OF MATERIALS**

<b>1</b>	<b>MAIN SLIDER RAIL</b>
<b>4</b>	<b>RAT RIG ENDCAPS</b>
<b>4</b>	<b>M5 8MM BUTTON HEAD SCREWS</b>
<b>1</b>	<b>RAT RIG CARRIAGE PLATE</b>
<b>1</b>	<b>1/4"-20 CAMERA SCREW</b>
<b>2</b>	<b>NORMAL WHEEL KIT</b>
<b>2</b>	<b>ECCENTRIC WHEEL KIT</b>
<b>1</b>	<b>BRAKE PLATE</b>
<b>2</b>	<b>M4 8MM CAP HEAD SCREW</b>
<b>1</b>	<b>BRAKE SCREW</b>
<b>1</b>	<b>TRIPOD PLATE</b>
<b>4</b>	<b>M5 COUNTERSINK SCREWS</b>

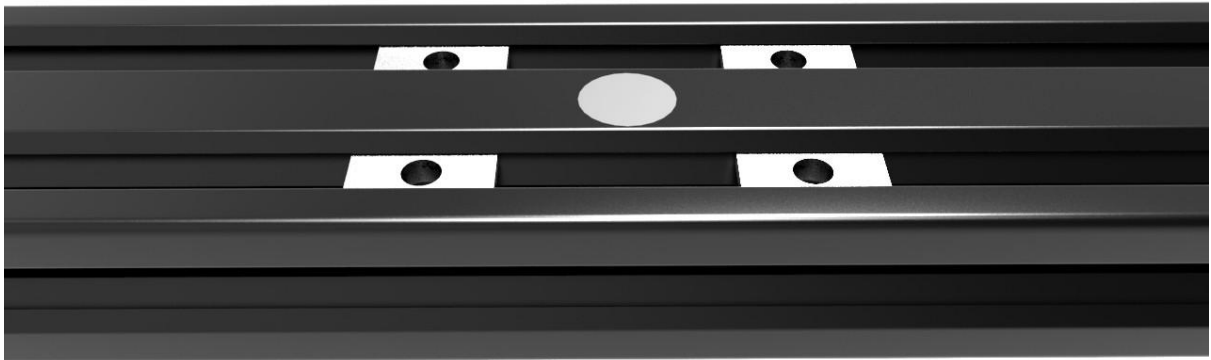
## **WHAT YOU'LL NEED**

- 1 3MM HEX KEY (ALLEN KEY)**
- 1 4MM HEX KEY (ALLEN KEY)**
- 1 10MM WRENCH OR SPANNER**
- 1 8MM WRENCH OR SPANNER**

**LET'S GET STARTED!**



**GRAB YOUR MAIN RAIL. LOCATE THE CENTER HOLE. THIS  
WILL BE THE UNDERSIDE OF YOUR SLIDER.**



**INSERT 4X T-NUTS AS SHOWN. MAKE SURE THEY ARE  
FACING UP (THE LIP WILL BE FACING DOWN).**



**GRAB 4X COUNTERSINK SCREWS AND 1X TRIPOD PLATE.  
THE T-NUTS ARE ALREADY IN THE RAIL.**



**THESE WILL BE ASSEMBLED AS SHOWN.**

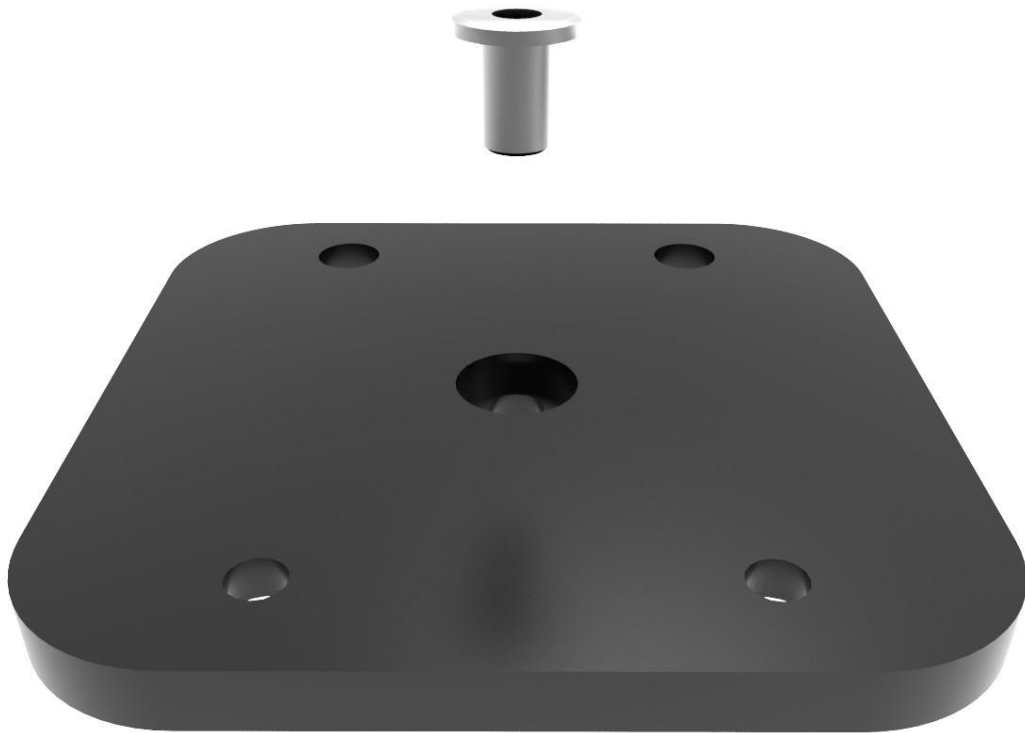




**FASTEN THE SCREWS INTO THE T-NUTS. DON'T TIGHTEN  
THESE MUCH, TO AVOID WARPING OF THE RAIL.**



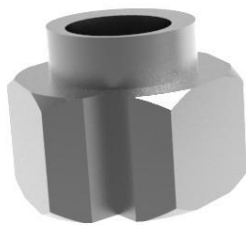
**THE UNDERSIDE OF THE RAIL IS READY. THE SLIDER NOW  
HAS STANDARD 3/8" AND 1/4" CONNECTIONS.**



**GRAB YOUR MAIN SLIDER CARRIAGE PLATE, AND THE 1/4" CAMERA SCREW. TURN THE PLATE OVER AS SHOWN. THE SCREW WILL FIT THE CENTER HOLE.**



**TIGHTEN THIS SCREW VERY WELL.**



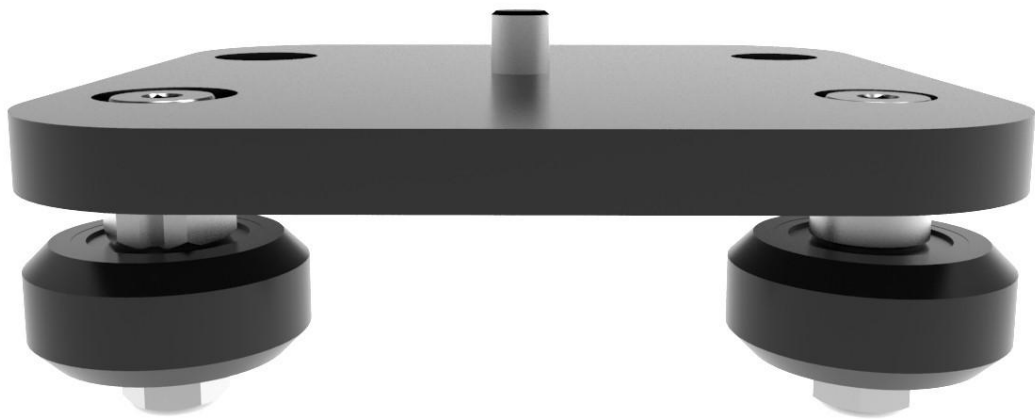
**GRAB THE 4X WHEEL KITS. YOU'LL NOTICE THERE ARE TWO TYPES. 2X ECCENTRIC WHEEL KITS (LEFT PICTURE), AND 2X NORMAL WHEEL KITS (RIGHT PICTURE).**



THEY ARE ASSEMBLED THE SAME WAY. DON'T ASSEMBLE  
YET.



**MOUNT THESE AS SHOWN ABOVE. MAKE SURE THE  
ECCENTRIC WHEELS GO ON THE SIDE OF THE PLATE WITH  
THE BIG HOLES(LEFT). THE NORMAL WHEELS WILL GO ON  
THE SIDE WITH THE SMALL HOLES(RIGHT).**



**TIGHTEN WELL. REPEAT FOR THE OTHER 2 WHEELS.**





**GRAB THE BRAKE PLATE, 2X M4\*8MM CAP HEAD SCREWS,  
AND THE BIG BRAKE SCREW.**



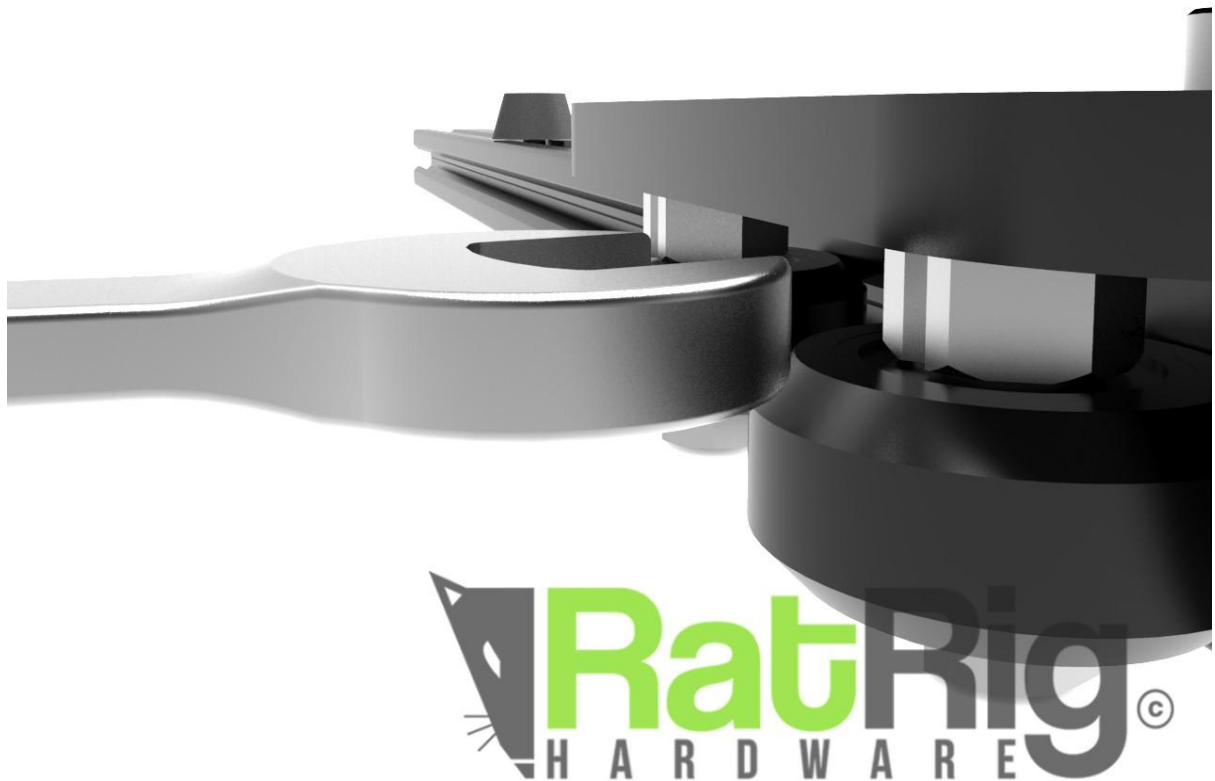
**MOUNT THE BRAKE PLATE AS SHOWN. TIGHTEN WELL.**



**INSERT THE BRAKE SCREW. AT THIS POINT YOUR CARRIAGE  
SHOULD BE READY AND LOOK LIKE THE ABOVE.**



**BEFORE INSERTING YOUR CARRIAGE ON TO THE MAIN RAIL,  
USE THE 10MM WRENCH TO TURN EACH ECCENTRIC  
SPACER TO FACE OUTWARDS AS SHOWN. THIS MEANS THE  
STRIPE IF FACING AWAY FROM THE RAIL.**



**CAREFULLY INSERT YOUR CARRIAGE ON TO THE RAIL. YOU  
CAN NOW TUNE THE MOVEMENT BY TURNING THE  
ECCENTRIC SPACERS. TURN THEM WITH VERY SMALL  
MOVEMENTS UNTIL PERFECT.**

## TIPS FOR TUNING:

- *THE IDEA IS TO GET A NICE EASY MOVEMENT, BUT WITH NO LOOSENESS OF THE CARRIAGE*
- *CARRIAGE SHOULD NOT TWIST WHEN YOU GRAB IT WITH YOUR HAND*
- *YOU SHOULD BE ABLE TO TURN THE WHEELS WITH YOUR FINGER WITHOUT THE CARRIAGE MOVING*
- *IF YOU TILT THE SLIDER, THE CARRIAGE SHOULD SLIDE DOWN THE RAIL NICELY JUST RELYING ON GRAVITY.*





**IF YOU'RE BUILDING WITHOUT SLIDER LEGS, GRAB 4X  
BUTTON HEAD SCREWS, AND 4X GREEN ENDCAPS.  
ASSEMBLE THESE ON THE RAIL ENDS.**



**IF YOU'RE BUILDING WITH SLIDER LEGS, MOUNT THEM  
USING THE 12MM CAP HEAD SCREWS (SUPPLIED WITH LEG  
KIT).**





**ALL DONE!**

**CONGRATULATIONS ON YOUR BUILD!**

